
Peace

£33,500

General.

Builder: Peter Nicholls

Type: Traditional

Fitted: Peter Nicholls

Year: 1989

Length: 62ft (18.8m)

Beam: 6ft 10in (2.1m) Draught: c2ft (0.6m)

Lying: High Line Yachting Iver

CRT no: 46540

CIN No: N/A

BSC to: 03/04/2023

History

The boat has had two owners since built, being custom made for the first owners. Last surveyed in April 2015, the same year new solar panels and inverter were fitted and the water tank was cleaned and treated professionally. Last blacked in September 2017 and two more anodes were fitted.

Hull & Exterior.

Material / build: All steel. Thicknesses: 10 – 6 - 4mm



Exterior: Black bitumen painted hull to rubbing band. Black from rubbing band through side decks, Dark blue cabin sides with red and white coachlines, Dark blue panels. White and yellow name plate to rear on both sides. White roof.

Windows: Anodised aluminium top hopper opening, Brass portholes, 2 side hatches leading to the engine room and one side hatch into the galley.

Forward well: Rope fender. Steel cants. 'T' stud. Gas locker containing 2 x 13kg gas bottles. Self draining steel well deck with inspection hatch to integral water tank below. Two central half glazed varnished timber doors to accommodation.

Roof: Sliding hatch over access aft. 2 solar panels, 8 mushroom vents, 2 chimney flues, plank and pole rack with plank and pole.

Aft deck: Rope fender, 2 mooring dollies, steel cants, diesel filler. Tiller steering. Self draining deck. Two central timber lined steel doors to accommodation.

Mechanical & Electrical.

Engine: BMC - C.B Marine Gearbox: PRM Cooling: Skin tank
Calorifier feed: Yes Last service: 2018
Bowthruster: No
Weed hatch: Quick release Stern gland greaser: Remote
Bilge pump: 12v
Batteries: 12v Domestic: 4 Engine: 1
240v: Yes Inverter: Victron Phoenix Sinewave 800W Charger: Sterling
Solar panels 2 x 235w

Interior.

Lining - floor to gunwale: White painted boards / Varnished timber board
Lining - gunwale to ceiling: White / varnished tongue and groove boards.
Lining - ceiling: Varnished tongue and groove boards
Flooring: Carpet / Timber laminate.
Lighting: Halogen
Cabin heating: Solid fuel stoves, one at the front, another in the aft cabin.
Insulation: Polystyrene
Water heating: Solid fuel stove back boiler, engine and 240v immersion.
Headroom: 6'3"

ACCOMMODATION (From aft)

Cabin Arrangement: Double cabin, Bathroom, Galley, Saloon

Berth arrangement: - fixed double in own cabin, Convertible double in saloon, convertible single in Boatman's cabin.

Double cabin: In from the engine room, the double bed goes lengthways to port, storage below and shelving above. Wardrobe forward. This is a large size cabin for a boat. Passageway continues forward into ...

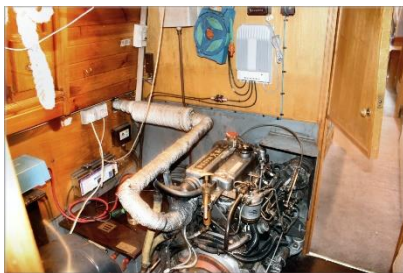


Bathroom: shower / bath to aft. White inset ceramic basin with storage below to port forward. Pump out toilet to centre. Passageway continues forward into ...

Galley: U-Shaped Counters to port. 4 gas hob oven and grill cooker to aft. Inset black plastic sink and drainer unit to centre port. Fridge beneath forward counter. Open plan forward into ...



Saloon: Convertible L-shaped sofa bed to port. Shelf unit in forward port corner. Solid fuel stove in forward starboard corner. Steps up to forward well.



This boat has been cleared and will be sold as viewed.

GENERAL

Berth transferable: Possible cruising berth by arrangement

Sale type: Private

VAT status: The VAT status of this vessel is not known.

Viewing: High Line Yachting, Mansion Lane, Iver, SL0 9RG
9am to 6pm Tuesday to Saturday, 11am to 5pm Sunday, closed Monday.

PLEASE NOTE

In this case we are acting as Brokers only.

Whilst every care has been taken in their preparation, the correctness of these particulars is not guaranteed.

The particulars are intended only as a guide and they do not constitute a term of any contract.

A prospective buyer is strongly advised to check the particulars and where appropriate at his own expense to employ a qualified Marine Surveyor to carry out a survey and / or to have an engine trial conducted which if conducted by us shall not imply any liability for such engine on our part.

The Vendor is not selling in the course of a business.

The VAT status of the vessel is not known, unless otherwise stated.

All sales subject to contract. No guarantee is given or implied as to the condition or legal title.

No appliances or systems have been tested. All measurements stated are approximate.

© Virginia Currer Marine Ltd 2020