

Virginia Currer Marine Ltd

Tel: 01753 652502
Mob: 07860 480079

Inland Waterway Specialists

The Boatyard, Mansion Lane, Iver, Buckinghamshire, SL0 9RG

Email: jc@vcmarine.co.uk
Web: www.vcmarine.co.uk

BOB'S YOUR UNCLE

£85,000

General.

Builder: Burscough Boat Engineering Ltd *Type:* Wide beam
Fitted: Anna Jones *Year:* 2014 completed
Length: 60ft (18.3m) *Beam:* 12ft (3.66m) *Draught:* c2ft (0.6m)
Lying: High Line Yachting, Iver.
CRT no: 522937 *CIN No:* GB-BBT00001K212 *BSC to:* 14/11/2022

History

This is a modern design wide beam with two cabins, designed for free standing furniture, very spacious boat with white panelling and oak trims. This vessel comes with a residential/transferable mooring in West London, Iver. (see details below for the mooring).

Last blacked in August 2018.

Hull & Exterior.

Material / build: All steel. *Thicknesses:* 10 – 6 - 5mm



Exterior: Black bitumen painted hull to rubbing band. Black from rubbing band through side decks, with non slip finish to side decks, stern and bow. Black cabin sides with yellow coach line with name sign written at the stern. Roof in yellow non-slip finish.

Windows: Anodised aluminium top opening and portholes, opening side doors in the saloon and galley.

Forward well: Barge style well. Rope fender. 'T' stud. Self draining steel well deck with inspection hatch to bow thruster. Locker. Two central small timber lined steel doors to accommodation.

Roof: Sliding hatch over access aft. Solar panels. Chrome mushroom vents.

Aft deck: Rope fender, 2 mooring dollies, diesel filler. Gas locker containing 2 x 13kg gas bottles. Tiller steering. Self draining deck. Two central half glazed varnished timber lined steel doors to accommodation.

Mechanical & Electrical.

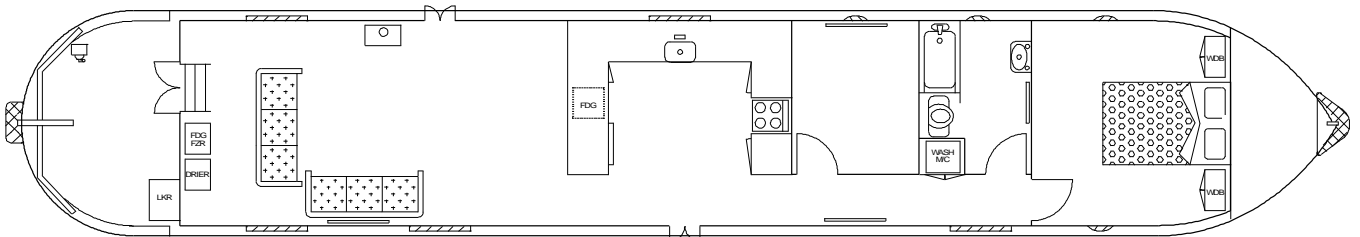
Engine: Barrus Shire 70hp *Gearbox:* PRM260
Cooling: Skin tank
Calorifier feed: Yes
Bowthruster: Vetus 9512, 1 battery
Weed hatch: Quick release
Stern gland greaser: Sealed water
Bilge pump: 12v
Batteries: 12v *Domestic:* 4 *Engine:* 1
240v: Yes *Inverter /Charger:* Sterling Pro Combi S 3500w / 95amp
Generator: No
Solar panels

Interior.

Lining - floor to gunwale: White painted panelling with oak trims
Lining - gunwale to ceiling: As above
Lining - ceiling: As above
Flooring: Oak flooring
Lighting: LED
Cabin heating: Solid fuel stove and radiators heated by Webasto (diesel boiler)
Insulation: Spray foam
Water heating: Engine and Webasto

ACCOMMODATION (From aft)

Cabin Arrangement: Saloon, Galley, Single cabin, Bathroom, Double cabin.



Berth arrangement: 6- fixed double in own cabin plus 2 convertible sofas in saloon.

Saloon: Steps to port down from stern, all free-standing furniture, currently comprises 2 sofas in the centre of the cabin. Solid fuel stove located to port. Against the aft bulkhead is a full size Candy Fridge / Freezer and Beko tumble dryer. Open plan forward into ...





Galley: The galley is U shape to port. Solid wood work surfaces with white painted drawer and cupboards below. Shoreline fridge below work surface. Buttlers sink. Free standing New World 4 gas hob burner with grill and oven. Passageway continues forward into ...

Single cabin: Currently being used as a storage room. This could take a single, bunks or a double bed, also could be converted into an office. Passageway continues forward with wardrobe to port housing the washing machine and further storage. Door into ...

Bathroom: Fully decorated in white, ¾ bath with shower above and curtains. Thetford electric flush cassette toilet. White sink mounted on forward bulkhead with heated towel radiator. Passageway continues forward into ...



Double cabin: The walk round double berth is located against the forward bulkhead with wardrobes to each side of the bed. Storage below and shelf above.

This boat has not been cleared and personal possessions will be removed prior to sale.

GENERAL

Berth transferable: Residential berth

Sale type: Private

VAT status: The VAT status of this vessel is not known.

Viewing: High Line Yachting, Mansion Lane, Iver,
9am to 6pm Tuesday to Saturday, Sundays 11am to 5pm.

Other sale considerations: The residential mooring is located at the High Line Yachting boatyard at Iver, on the Slough Arm of the Grand Union. The mooring is amongst a community of other residential boats. Parking is available in the boatyard with a security gate into the yard. A 'key' to the gate, toilet block etc. is available on a deposit.

Facilities offered are 240v electricity connection (charged by meter reading) and water point. BT telephone connection point (subject to the BT connection charge if applicable). Pump out/chemical toilet emptying facilities. Diesel, gas and coal and chandlery are available in the boatyard. Gas and coal deliveries Tuesday and Saturday afternoons. The boatyard is open and staffed from Tuesday to Sunday. Toilet and shower block (showers are token operated) with washing machine and tumble dryer (token operated). Incoming post facilities.

Please see HLY website www.high-line.co.uk for full details of the boatyard.

The current mooring rates are as follows:

Paid annually : £109.00 per ft annum

Alternatively this could become:

Paid six monthly : £57.55 per ft half year

Paid monthly : £10.10 per ft month payable by direct debit

A payment of six months' mooring fees in advance will be required as the first payment. A residential licence payable to Canal & River Trust is required. High Line Yachting reserve the right to refuse the transfer of the mooring. Council tax is payable.

Langley Station which is on the Paddington Line is within a few minutes walk of the moorings.

Please note – unfortunately no dogs allowed.

PLEASE NOTE

In this case we are acting as Brokers only.

Whilst every care has been taken in their preparation, the correctness of these particulars is not guaranteed.

The particulars are intended only as a guide and they do not constitute a term of any contract.

A prospective buyer is strongly advised to check the particulars and where appropriate at his own expense to employ a qualified Marine Surveyor to carry out a survey and / or to have an engine trial conducted which if conducted by us shall not imply any liability for such engine on our part.

The Vendor is not selling in the course of a business.

The VAT status of the vessel is not known, unless otherwise stated.

All sales subject to contract. No guarantee is given or implied as to the condition or legal title.

No appliances or systems have been tested. All measurements stated are approximate.

© Virginia Currer Marine Ltd 2020