
Mullo

£18,000

General.

Builder: G.T Boat builders*Type:* Cruiser*Fitted:* Owner*Year:* 1976*Length:* 42ft (12.8m)*Beam:* 6ft 10in (2.1m) *Draught:* c2ft (0.6m)*Lying:* High Line Yachting, Iver*CRT no:* 61865*CIN No:* N/A*BSC to:* 01/22

History

The hull was last blacked in October 2017 .

Hull & Exterior.

Material / build: All steel. Thicknesses: 6 – 5 – 4



Exterior: Black bitumen painted hull to rubbing band. Blue from rubbing band through side decks, with non slip finish to side decks. Blue cabin sides with cream coachline. Blue roof

Windows: Blue painted Anodised aluminium sliding

Forward well: Rope fender. Steel cants. 'T' stud. Gas locker containing 3 x 13kg gas bottles. Self draining Studded steel well deck. Two central Timber lined doors to accommodation.

Roof: Sliding hatch over access aft. 4 mushroom vents, chimney flue, Plank and pole rack with plank and pole, Blue steel hand rails

Aft deck: Cruiser stern. rope fender, 2 mooring dollies, diesel filler. Tiller steering. Self draining deck. Two central timber lined steel doors to accommodation.

Mechanical & Electrical.

Engine: Lister 19hp Gearbox: Lister 150 Manuel Cooling: Air
Calorifier feed: No Last service: Hours:
Bowthruster: No
Weed hatch: Quick release Stern gland greaser: Remote
Bilge pump: 12v
Batteries: 12v Domestic: 2 Engine: 1
240v: No Inverter: 750W

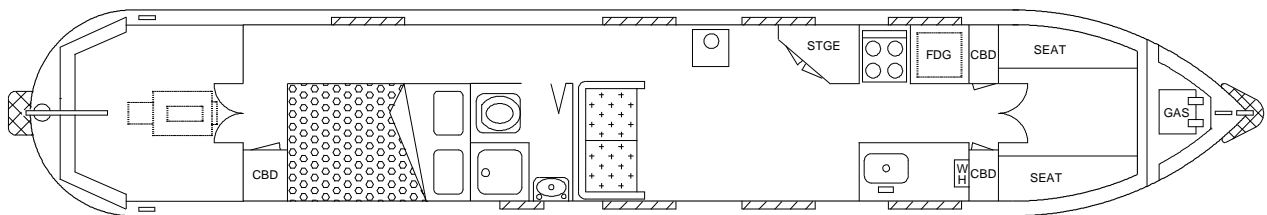
Solar panel with charging system.

Interior.

Lining - floor to gunwale: Varnished tongue and groove
Lining - gunwale to ceiling: Varnished tonging and groove
Lining - ceiling: Varnished tongue and groove
Flooring: Grey carpet
Lighting: L.E.D
Cabin heating: Solid fuel stove
Insulation: Rock wool
Water heating: Morco
Headroom: 6'2"

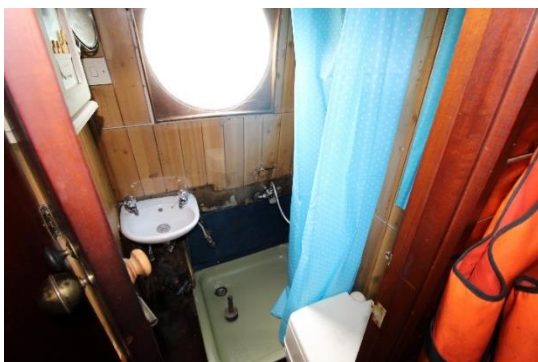
ACCOMMODATION (From aft)

Cabin Arrangement: Double cabin, Bathroom, Saloon, Galley



Berth arrangement: 2- fixed double in own cabin

Double cabin: Double bed going lengthways to starboard with storage below and shelving above. Passageway continues forward into ...



Bathroom: All to port, White ceramic basin at the forward, stand-in shower against the aft bulkhead with shower curtain. Cassette toilet. Passageway continues forward into ...

Saloon: Designed for free standing furniture. Small sofa to starboard against aft bulkhead. Solid fuel stove to port centre, cupboard to port against forward bulkhead. open plan forward into ...



Galley: Storage cupboards both sides against forward bulkhead. Inset single bowl stainless steel sink to starboard. Fridge and 4 gas hob oven to port. Passageway continues forward into ...

This boat has been cleared and will be sold as viewed.

GENERAL

Berth transferable: Possible cruising berth by arrangement

Sale type: Private

VAT status: The VAT status of this vessel is not known.

Viewing: High Line Yachting, Mansion Lane, Iver, SL0 9RG
9am to 6pm Tuesday to Saturday, 11am to 5pm Sunday, closed Monday.

PLEASE NOTE

In this case we are acting as Brokers only.

Whilst every care has been taken in their preparation, the correctness of these particulars is not guaranteed.

The particulars are intended only as a guide and they do not constitute a term of any contract.

A prospective buyer is strongly advised to check the particulars and where appropriate at his own expense to employ a qualified Marine Surveyor to carry out a survey and / or to have an engine trial conducted which if conducted by us shall not imply any liability for such engine on our part.

The Vendor is not selling in the course of a business.

The VAT status of the vessel is not known, unless otherwise stated.

All sales subject to contract. No guarantee is given or implied as to the condition or legal title.

No appliances or systems have been tested. All measurements stated are approximate.

© Virginia Currer Marine Ltd 2020

Accredited members of

