

# Virginia Currer Marine Ltd

Tel: 01753 652502

Mob: 07860 480079

## Inland Waterway Specialists

The Boatyard, Mansion Lane, Iver, Buckinghamshire, SL0 9RG

Email: [jc@vcmarine.co.uk](mailto:jc@vcmarine.co.uk)

Web: [www.vcmarine.co.uk](http://www.vcmarine.co.uk)

### **SENTINEL**[DRAFT]

**£55,000**

#### **General.**

*Builder:* Believed Brian Duval

*Type:* Traditional Stern

*Year:* 1976

*Length:* 70ft (21.3m)

*Beam:* 6ft 10in (2.1m)    *Draught:* c2ft (0.6m)

*Lying:* High Line Yachting, Iver

*CRT no:* 70584

*CIN No:* N/A

*BSC to:* 15/6/2022

#### **History**

This vessel was last out of the water in September 2017 for blacking and the last survey was carried out in October 2019.

#### **Hull & Exterior.**

*Material / build:* All steel.

*Thicknesses:* Base plate 8 and 10mm

Sides 6.6 and 6mm

Cabin sides 4 and 5mm



*Exterior:* Black bitumen painted hull to side decks. Red side decks with non slip finish. Blue cabin sides with yellow coachline to the rear and yellow name within. Red roof.

*Windows:* Brass portholes and 2 side doors to engine room.

*Forward well:* Tug style bow. Steel cants. 'T' stud. Storage locker. Gas locker containing 3 x 13kg gas bottles. Self draining steel well deck. Two central timber lined steel doors to accommodation.

*Roof:* Sliding hatch over access aft and forward. Chimney flue, 3 mushroom vents, 3 pigeon boxes, 2 solar panels with one in a box ready to replace the broken one, Horn and inset steel hand rails.

*Aft deck:* Rope fender, 2 mooring dollies, steel cants, Tiller steering. Self draining deck. Two central timber lined steel doors to accommodation.

---

## **Mechanical & Electrical.**

Engine: Bolinder                      Gearbox: Bollinder                      Cooling: Indirect raw water  
Calorifier feed: No                      Last service:                      Hours:  
Bowthruster: No  
Weed hatch: None                      Stern gland greaser: Remote  
Bilge pump: None  
Batteries: 12V                      Domestic: 3                      Engine: 1  
240v: Yes                      Charger: Victron centuar 12 volt 80 amp                      Generator: Beta marine

---

## **Interior.**

Lining - floor to gunwale: White painted panelling  
Lining - gunwale to ceiling: White painted panelling  
Lining - ceiling: Varnished tongue and groove  
Flooring: Timber style vinyl  
Lighting: L.E.D  
Cabin heating: Solid fuel stove with back boiler  
Insulation: Spray foam  
Water heating: Boiler plate, Calorifier.  
Headroom: 5'10"

---

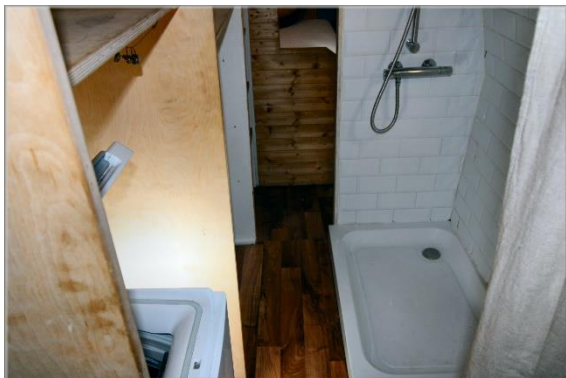
## **ACCOMMODATION** (From aft)

*Cabin Arrangement:* Back cabin, Engine room, Double cabin, Bathroom, Galley, Saloon

*Berth arrangement:* 2 - fixed double in own cabin. Single in boatman's cabin.

*Back cabin:* Converted boatman's cabin into a large storage room and could be used as a single berth. Stable style doors leading into the engine room.

*Double cabin:* Double bed to starboard going lengthways with storage below. Shelving on forward and aft bulkheads above bed. Storage unit further forward to starboard. Passageway continues forward into ...



*Bathroom:* Stand-in shower to port against aft bulkhead, White ceramic basin mounted on forward bulkhead. Storage and shelving along starboard wall. Passageway continues forward into ...

**Galley:** Organized on both side of the vessel with marble effect work surface. Inset single bowl stainless steel sink and drainer unit to port with cupboards below, free standing 4 gas hob, oven and grill to starboard with 12v fridge further. Open plan forward into ...



**Saloon:** Designed for free standing furniture currently housing a convertible sofa bed to starboard. Solid fuel stove to port. Shelving on the bulkheads either side of the front door with steps leading up to the front deck.

This boat has been cleared and will be sold as viewed.

---

#### **GENERAL**

**Berth transferable:** Possible cruising berth by arrangement

**Sale type:** Private

**VAT status:** The VAT status of this vessel is not known.

**Viewing:** High Line Yachting, Mansion Lane, Iver, SL0 9RG  
9am to 6pm Tuesday to Saturday, 11am to 5pm Sunday, closed Monday.

#### **PLEASE NOTE**

*In this case we are acting as Brokers only.*

*Whilst every care has been taken in their preparation, the correctness of these particulars is not guaranteed.*

*The particulars are intended only as a guide and they do not constitute a term of any contract.*

*A prospective buyer is strongly advised to check the particulars and where appropriate at his own expense to employ a qualified Marine Surveyor to carry out a survey and / or to have an engine trial conducted which if conducted by us shall not imply any liability for such engine on our part.*

*The Vendor is not selling in the course of a business.*

*The VAT status of the vessel is not known, unless otherwise stated.*

*All sales subject to contract. No guarantee is given or implied as to the condition or legal title.*

*No appliances or systems have been tested. All measurements stated are approximate.*

© Virginia Currer Marine Ltd 2020

Accredited members of

