
SUMMER PLACE

£28,000

General.

Builder: Arcrite *Type:* Cruiser Stern
Fitted: Arcrite *Year:* 1988
Length: 38ft (m) *Beam:* 6ft 10in (2.1m) *Draught:* c2ft (0.6m)
Lying: High Line Yachting, Iver
CRT no: 73288 *CIN No:* N/A *BSC to:* 08/2021

History

This vessel has been with the current owner since 2017, this is when the boat was last surveyed and blacked. The interior of the boat was repainted in 2018.

Maintenance and upgrades carried out.

New solar panels 250w

New inverter/ charger fitted

Bathroom refurbished with new shower tray and pump out

Engine service plus alternator reconditioned, new batteries.

Small area of overplanting at the forward swim on starboard side.

New Hamlet solid fuel stove with new flue and chimney collar.

New bilge pump

Hull & Exterior.

Material / build: All steel. Thicknesses: 6 – 5mm



Exterior: Black bitumen painted hull to rubbing band. Blue from rubbing band through side decks, cabin sides and roof. Torquiose fill length pannels with white cosch line on cabin sides with name written.

Windows: Anodised aluminium top hopper opening and portholes.

Forward well: Rope fender. 'T' stud. Gas locker containing 2 x 13kg gas bottles. Self draining steel well. Cratch cover. Two central half glazed varnished timber doors to accommodation.

Roof: Tubular steel hand rails, mushroom vents, flue for solid fuel stove, solar panels. Pole, hook and plank.

Aft deck: Rope fender, 2 mooring dollies, diesel filler. Tiller steering. Steel rail around stern. Cover. Steps down to port with timber door to accommodation.

Mechanical & Electrical.

Engine: Ford 4cyl *Gearbox:* Hurth *Cooling:* Indirect water
Calorifier feed: Yes *Last service:* September 2018
Weed hatch: Bolted *Stern gland greaser:* Remote
Bilge pump: 12v Auto
Batteries: 12v *Domestic:* 2 *Engine:* 1
240v: Yes *Inverter/Charger:* Pure Sinewave Combi
Generator: No

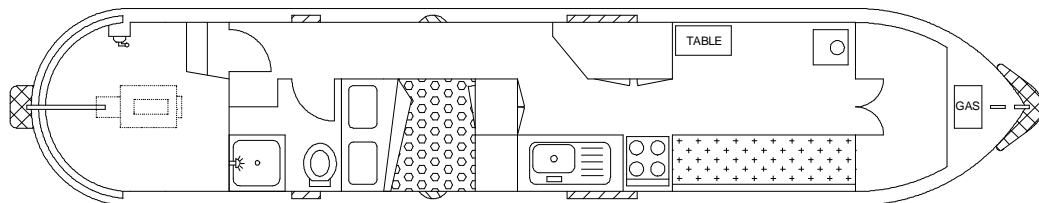
Solar panels 250w

Interior.

Lining - floor to gunwale: Pine tongue and groove.
Lining - gunwale to ceiling: White painted
Lining - ceiling: tongue and groove.
Flooring: Laminate
Lighting: Tungsten tubes
Cabin heating: Solid fuel stove
Insulation: Polystyrene
Water heating: Engine
Headroom: 6ft 2in

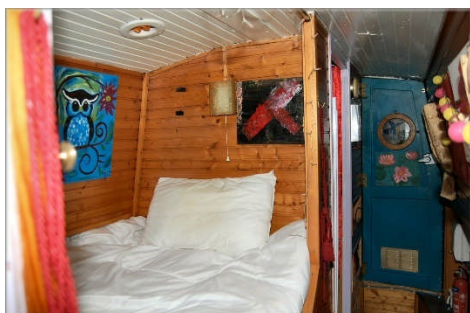
ACCOMMODATION (From aft)

Cabin Arrangement: Bathroom, Double cabin, Galley, Saloon.



Berth arrangement: 2- fixed double in own cabin

Bathroom: Step in shower with curtains against the aft bulkhead. Pump out toilet. Full length mirror mounted on the door. Passageway continues forward into ...



Double cabin:

The double bed is lengthways to starboard with interior sprung mattress c.6ft3in x 4ft, with storage below. Mounted on the forward bulkhead is a cupboard and shelf unit. Passageway continues forward into ...

Galley: Fitted shelves and cupboard on the aft bulkhead. To starboard is a free standing 4 hob burner with grill and oven. Inset single bowl stainless steel sink and drainer unit. To port is a section of work surface with further storage. Open plan forward into ...



Saloon: Fitted seating area to starboard with storage below. To port is a folding table with two chairs, at the forward end is the solid fuel stove mounted on a tile hearth. Steps up to forward well.

This boat has not been cleared and personal possessions will be removed prior to sale.

GENERAL

Berth transferable: Possible cruising berth by arrangement

Sale type: Private

VAT status: The VAT status of this vessel is not known.

Viewing: High Line Yachting, Mansion Lane, Iver, SL0 9RG
9am to 6pm Tuesday to Saturday, 11am to 5pm Sunday, closed Monday.

PLEASE NOTE

In this case we are acting as Brokers only.

Whilst every care has been taken in their preparation, the correctness of these particulars is not guaranteed.

The particulars are intended only as a guide and they do not constitute a term of any contract.

A prospective buyer is strongly advised to check the particulars and where appropriate at his own expense to employ a qualified Marine Surveyor to carry out a survey and / or to have an engine trial conducted which if conducted by us shall not imply any liability for such engine on our part.

The Vendor is not selling in the course of a business.

The VAT status of the vessel is not known, unless otherwise stated.

All sales subject to contract. No guarantee is given or implied as to the condition or legal title.

No appliances or systems have been tested. All measurements stated are approximate.

© Virginia Curren Marine Ltd 2018

Accredited members of

