
COWLEY WIDEBEAM [DRAFT]

£29,000

General.

Builder: HT Fabrications

Type: Widebeam

Year: 2014

Length: 60ft (18m)

Beam: 11ft 6in (m)

Draught: c2ft (0.6m)

Lying: High Line Yachting, Cowley

CRT no: 522630

CIN No: Annex IIIa

BSC to: 12/2019

History

This vessel is a project boat.

Engine currently not functioning and the Webasto would need radiators fitted.

Exterior side hatches need fitting.

The boat was las blacked in 2016 and the superstructure was repainted at the same time.

Hull & Exterior.

Material / build: All steel. Thicknesses: 10 6 – 4mm



Exterior: Black bitumen painted hull to rubbing band. Black from rubbing band through side decks.

Windows: Double glazed tinted. Three side hatches, only one with fitted windows.

Mechanical & Electrical.

Engine: Vetus 65hp currently not functioning.

Gearbox: Vetus

Cooling: Skin tank

Bowthruster: Vetus 95

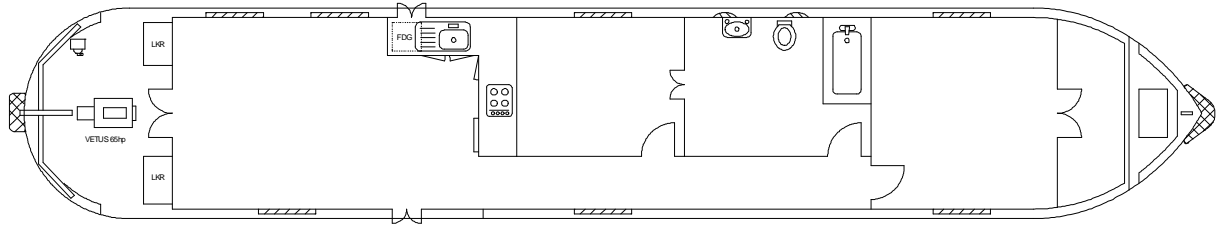
Inverter / Charger: Vetus

Glavanic Isolator fitted.

Cabin heating: Webasto
Insulation: Celotex boards

ACCOMMODATION (From aft)

Cabin Arrangement: Saloon, Galley, Cabin, Bathroom, Cabin.

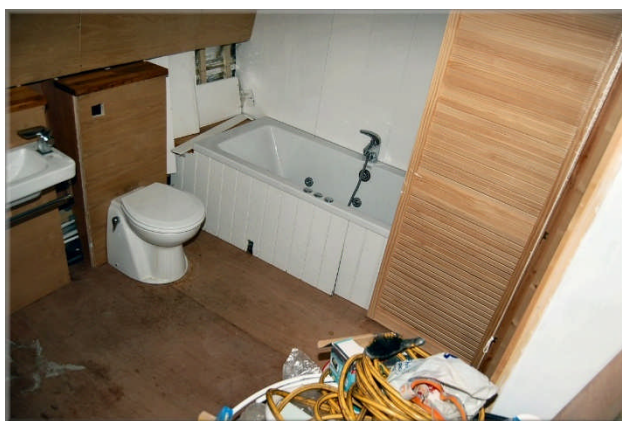


This is an unfinished boat, the boat has been insulated with Celotex boards and some lining has been fitted, there is some more lining on board.

Black water tank and fresh water tank.

The galley is nearly completed with worksurfaces, Baumatic hob, oven and grill, Indesit fridge and storage units.

Pump out toilet, jacuzzi bath and sink.



This boat has been cleared and will be sold as viewed.

GENERAL

Berth transferable: Possible cruising berth by arrangement

Sale type: Private

VAT status: The VAT status of this vessel is not known.

Viewing: High Line Yachting, Cowley
9am to 6pm Tuesday to Saturday.

PLEASE NOTE

In this case we are acting as Brokers only.

Whilst every care has been taken in their preparation, the correctness of these particulars is not guaranteed.

The particulars are intended only as a guide and they do not constitute a term of any contract.

A prospective buyer is strongly advised to check the particulars and where appropriate at his own expense to employ a qualified Marine Surveyor to carry out a survey and / or to have an engine trial conducted which if conducted by us shall not imply any liability for such engine on our part.

The Vendor is not selling in the course of a business.

The VAT status of the vessel is not known, unless otherwise stated.

All sales subject to contract. No guarantee is given or implied as to the condition or legal title.

No appliances or systems have been tested. All measurements stated are approximate.

© Virginia Currer Marine Ltd 2018

Accredited members of

