

# Virginia Currer Marine Ltd

## Inland Waterway Specialists

The Boatyard, Mansion Lane, Iver, Buckinghamshire, SL0 9RG

Tel: 01753 652502

Mob: 07860 480079

Email: [jc@vcmarine.co.uk](mailto:jc@vcmarine.co.uk)

Web: [www.vcmarine.co.uk](http://www.vcmarine.co.uk)

---

### T'PAU

### £115,000

---

#### General.

<i>Builder:</i> Colecraft	<i>Type:</i> Wide beam	
<i>Fitted:</i> Mathews / Oxley	<i>Year:</i> 2014	
<i>Length:</i> 65ft	<i>Beam:</i> 11ft	<i>Draught:</i> c2ft (0.6m)
<i>Lying:</i> Bourne End		
<i>CRT no:</i> 522844	<i>CIN No:</i> GB-COL140904WBA	<i>BSC to:</i> 06/2019

---

#### History

This vessel has been with the current owners since new, built to their specifications. Rare wide beam with traditional stern and engine room. Beautiful boat with all cabins well sized, quality fit out. Designed as a cruising boat with built-in generator, large inverter, charger, solar panels, Trojan batteries etc.. However, this boat can be purchased on her current mooring, stunning location in Bourne End with easy access to London.

The vessel was blacked with Epoxy when new and the superstructure was painted in 2015.

---

#### Hull & Exterior.

*Material / build:* All steel. Thicknesses: 10 – 6 – 4 - 5mm



*Exterior:* Black Epoxy painted hull up to side decks. Dark green cabin sides with cream coach line. Red pannels at the stren with name sign written.

*Windows:* All double glazed. Gold anodised aluminium top hopper opening, opening side doors to each side, one in the saloon and the other in the galley. Portholes in engine room.

*Forward well:* Rope fender. Steel cants. 'T' stud. Gas locker containing 2 x 13kg gas bottles. Self draining steel well deck with inspection hatch to integral water tank below. Storage locker / bench. Hatch for bowthruster. Two central stable style timber lined steel doors to accommodation.

**Roof:** Sliding hatch over access aft. 5 mushroom vents, integral steel hand rails, two centre eyes, flue for solid fuel stove, solar panels.

**Aft deck:** Rope fender, 2 mooring dollies, steel cants, diesel filler. Tiller steering. Self draining deck. Two central timber lined steel doors to accommodation.

---

### **Mechanical & Electrical.**

**Engine:** Beta Marine 75hp Hospital silencer                      **Gearbox:** PRM 260 Hydraulic  
**Last service:** 10/2017   **Hours:** 91.9  
**Cooling:** Skin tank  
**Calorifier feed:** Yes  
**Bowthruster:** Vetus 75 KGF  
**Weed hatch:** Quick release  
**Stern gland greaser:** Remote  
**Bilge pump:** 12v  
**Batteries:** 6X6v Trojan T105 Paired for 12v, Domestic  
                  1 x 12v Engine / Generator  
                  1 x 12v Bow thruster  
**240v:** Yes  
**Inverter:** Victron Sinewave 2000w  
**Charger:** Pro Charge Ultra 60amp  
**Generator:** Betaset 9.5KVA  
Victron solar panels 4x 100w / Victron Blue Solar MPPT 100/30 charge controller.  
Sound proof engine boards.

---

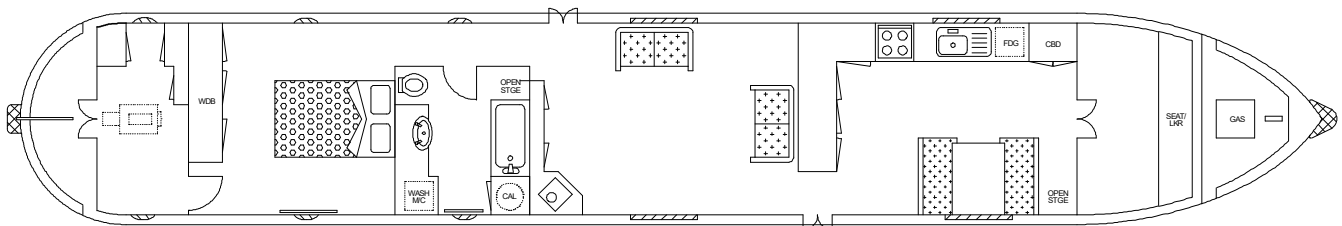
### **Interior.**

**Lining - floor to gunwale:** 6mm oak faced panelling with solid oak trims  
**Lining - gunwale to ceiling:** 6mm white painted birch faced ply with solid oak trims  
**Lining - ceiling:** As above  
**Flooring:** Light brown carpet, galley and bathroom with tile effect vinyl  
**Lighting:** LED  
**Cabin heating:** Solid fuel stove with back boiler and Webasto heating radiators.  
**Insulation:** Spray foam plus a foil back insulation under floor.  
**Water heating:** Calorifier heated by stove (Back boiler), Webasto, engine, generator and 240v immersion.  
**Headroom:** 6ft 6in

---

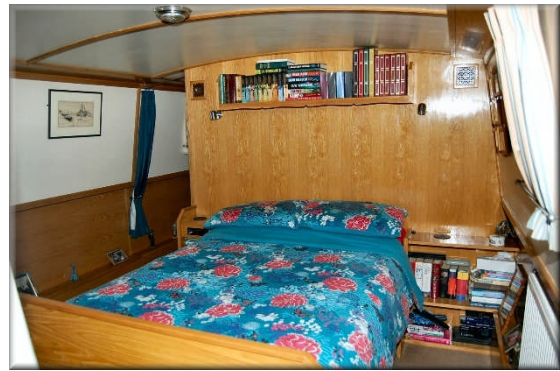
### **ACCOMMODATION** (From aft)

**Cabin Arrangement:** Engine room, Double cabin, Bathroom, Saloon, Galley / Dinette



**Berth arrangement:** 4- fixed double in own cabin plus convertible dinette

*Double Cabin:* door to starboard from the engine room into the cabin, the whole width of the aft bulkhead is a three-door fitted illuminated wardrobe with hanging space, shelves and chest of drawers. The walk around bed is in the centre of the cabin against the forward bulkhead, storage below and reading lights above. Fitted bed side table to each side. Door to port continues forward into passageway ...



*Bathroom:* Large bathroom with bath, shower over and folding doors. Storage cupboards to each side of the bath, the one to starboard is an airing cupboard and below is the calorifier. Against the aft bulkhead is a section of work surface with an inset white Vanity basin with mixer tap, storage and Hotpoint washing machine below the work surface. Electric flush Thetford cassette toilet with 2 spare cassettes. Passageway continues forward into ...

*Saloon:* Designed for free standing furniture, currently comprises 2 x two-seater sofas and an arm chair, fitted unit against the aft bulkhead with Tv. Solid fuel stove mounted on a large dark grey tile hearth. Open plan forward into ...



*Galley:* The galley is L shape to port with custom made worktop with grey granite effect finish. Storage cupboards and drawers below. Free standing New World 4 hob gas burner with oven and grill below. Inset single bowl stainless steel sink and drainer unit. Shoreline fridge, microwave on worktop. To starboard is a Pullman style dinette, this can be used as a double berth. At the forward end of the galley to starboard is a section of open storage and full height larder to port. Steps up to forward well.

This boat has not been cleared and personal possessions will be removed prior to sale.

---

## **GENERAL**

*Berth transferable:* Possible Pied-de-terre berth by arrangement

*Sale type:* Private

*VAT status:* The VAT has been paid.

*Viewing:* By appointment

*Other sale considerations:* Please contact us for further information regarding the mooring.

### **PLEASE NOTE**

*In this case we are acting as Brokers only.*

*Whilst every care has been taken in their preparation, the correctness of these particulars is not guaranteed.*

*The particulars are intended only as a guide and they do not constitute a term of any contract.*

*A prospective buyer is strongly advised to check the particulars and where appropriate at his own expense to employ a qualified Marine Surveyor to carry out a survey and / or to have an engine trial conducted which if conducted by us shall not imply any liability for such engine on our part.*

*The Vendor is not selling in the course of a business.*

*The VAT status of the vessel is not known, unless otherwise stated.*

*All sales subject to contract. No guarantee is given or implied as to the condition or legal title.*

*No appliances or systems have been tested. All measurements stated are approximate.*

© Virginia Currer Marine Ltd 2017

*Accredited members of*

