
SERENITY

£25,500

General.

Builder: black country boats *Type:* Traditional style
Fitted: Partly refitted by owner *Year:* 1985
Length: 40ft (12m) *Beam:* 6ft 10in (2.1m) *Draught:* c2ft (0.6m)
Lying: High Line Yachting, Iver
CRT no: 73484 *CIN No:* N/A *BSC to:*08/2021

History

This vessel has been with the current owner since 2015 and sold by ourselves previously. The current owner fitted in 2017 a new front cratch frame with cover, also a new rear cover was fitted. New Eberspacher was installed in 2015 and serviced every 6months.

Hull & Exterior.

Material / build: All steel. Thicknesses: 6mm



Exterior: Black bitumen painted hull to rubbing band. Black from rubbing band to edge of side deck. Blue cabin sides with grey panels, white coach line and white name on side of cabin. Blue roof

Windows: 6 brass port holes on either side spread evenly across the boat.

Forward well: Rope fender. Steel cants. 'T' stud. Gas locker containing 2 x 13kg gas bottles. Self draining steel well deck with inspection hatch to integral water tank below. Water intake on well floor. Astro turf covering front well floor. Cratch cover. Two central half glazed varnished timber doors to accommodation.

Roof: Sliding hatch over access aft with an open back cratch cover. Pigeon box toward stern. 4 mushroom vents around middle and a plank/ pole rack toward bow.

Aft deck: Rope fender, 2 mooring dollies, steel cants, diesel filler. Tiller steering. Self draining deck. Two central timber lined steel doors to accommodation.

Mechanical & Electrical.

Engine: Yanmar 3 cylinder 27hp Gearbox: PRM 160 Last service: 2016
Cooling: Skin tank
Calorifier feed: No
Bowthruster: No
Weed hatch: Bolted
Stern gland greaser: Remote
Bilge pump: 12v
Batteries: 12v Domestic: 3 Engine: 1
240v: Yes
Inverter: Pure Sine Wave 1500w
Charger: Sterling, clipper battery monitor No
Generator: No
Galvanic Isolator
Solar panel with management system.

Interior.

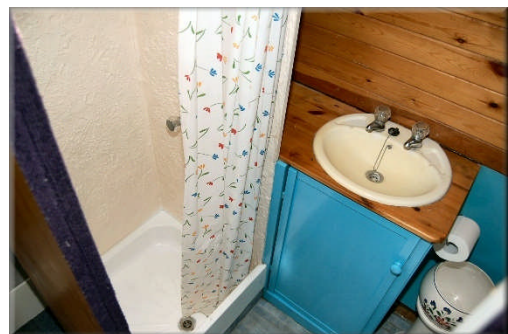
Lining - floor to gunwale: White painted panelling
Lining - gunwale to ceiling: White painted tongue and groove.
Lining - ceiling: As above
Flooring: Blue carpet tiles
Lighting: Halogen bulbs
Cabin heating: 3 radiators heated by the Eberspacher
Insulation: Spray foam
Water heating: Eberspacher
Headroom: 6ft

ACCOMMODATION (From aft)

Cabin Arrangement: Bathroom, Cabin, Galley, Saloon

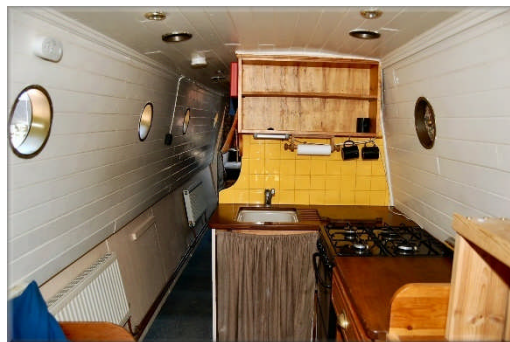
Berth arrangement: 2 – single in cabin and single in saloon also used as a sofa.

Bathroom: Steps down from engine room into hallway with bathroom to port. Cassette toilet against the forward bulkhead, to port is an inset white basin with storage beneath, step in shower with curtain at the aft end. Passageway continues forward into..



Single cabin: The single bed is lengthways to port with interior foam mattress, storage below and shelves above on the forward bulkhead. There is section of wood that can be erected and used as desk. Passageway continues forward into..

Galley: L shape located to port. Inset sink at the aft end with storage below. Free standing 4 gas hob burner with grill and over. Small Lec Shoreline 12v fridge next to oven under counter. Open plan forward into ...



Saloon: Fitted sofa on starboard side, this can be used as a single berth. Shelving and storage area on port side, TV above shelves. Hole on the floor between sofa and shelves for removable round table.

This boat has been cleared and will be sold as viewed.

GENERAL

Berth transferable: Possible cruising berth by arrangement

Sale type: Private

VAT status: The VAT status of this vessel is not known.

Viewing: High Line Yachting, Mansion Lane, Iver, SL0 9RG
9am to 6pm Tuesday to Saturday, 11am to 5pm Sunday, closed Monday.

PLEASE NOTE

In this case we are acting as Brokers only.

Whilst every care has been taken in their preparation, the correctness of these particulars is not guaranteed.

The particulars are intended only as a guide and they do not constitute a term of any contract.

A prospective buyer is strongly advised to check the particulars and where appropriate at his own expense to employ a qualified Marine Surveyor to carry out a survey and / or to have an engine trial conducted which if conducted by us shall not imply any liability for such engine on our part.

The Vendor is not selling in the course of a business.

The VAT status of the vessel is not known, unless otherwise stated.

All sales subject to contract. No guarantee is given or implied as to the condition or legal title.

No appliances or systems have been tested. All measurements stated are approximate.

© Virginia Currer Marine Ltd 2017

Accredited members of

