

FLORENCE [DRAFT]

£99,000

General.

Builder: Viking Canal Boat Ltd *Type:* Widebeam
Fitted: Viking Canal Boat Ltd *Year:* 2014
Length: 72ft (21m) *Beam:* 12ft (m) *Draught:* c2ft (0.6m)
Lying: Newbury
CRT no: 524301 *CIN No:* GB-VCB00145E414 *BSC to:*

History

This vessel has a modern design with good layout, lots of storage and an on-suite in main cabin. Comprises all utilities such as dishwasher, washing machine and fridge/freezer.

Blacked with Epoxy since new.

Hull & Exterior.

Material / build: All steel. Thicknesses: 10 – 6 – 5 – 4mm



Exterior: Epoxy painted hull to rubbing band. Dark blue from rubbing band through side decks, cabin sides and roof, with non slip finish to side decks. White full length panel on cabin sides with pale grey coach line. White panel on roof with non-slip finish.

Windows: Mainly portholes with top hopper opening, one anodised aluminium top hopper opening in saloon and opening side doors in the galley.

Forward well: Large forward well with storage lockers / benches. Rope fender. Steel cants. 'T' stud. Gas locker containing 2 x 13kg gas bottles. Self draining steel well deck with inspection hatch to integral water tank below. Two central half glazed varnished timber doors to accommodation.

Roof: Sliding hatch over access aft. 3 opening skylights, 6 mushroom vents, slue for solid fuel stove, tunnel light and horn.

Aft deck: Rope fender, 2 mooring dollies, Tiller steering. Self draining deck with steel rail around stern. Storage locker to each side of the doors. Two central timber lined steel doors to accommodation.

Mechanical & Electrical.

Engine: Beta Marine Kubota 75hp Twin alternator, hospital Exhaust.

Gearbox: PRM 260

Cooling: Skin tank

Calorifier feed: Yes

Bowthruster: Lewmar 6.kw

Weed hatch: Quick release

Stern gland greaser: Remote

Bilge pump: 12v

Batteries: 12v Domestic: 5 Engine: 1

240v: Yes *Inverter / Charger:* Victron Multiplus 3000w 120amp

Generator: No

Galvanic Isolator

Interior.

Lining - floor to gunwale: Oak faced panelling

Lining - gunwale to ceiling: White painted panelling with matching trim

Lining - ceiling: As above

Flooring: Laminate

Lighting: LED

Cabin heating: Solid fuel stove and Eberspacher heating radiators (being repaired)

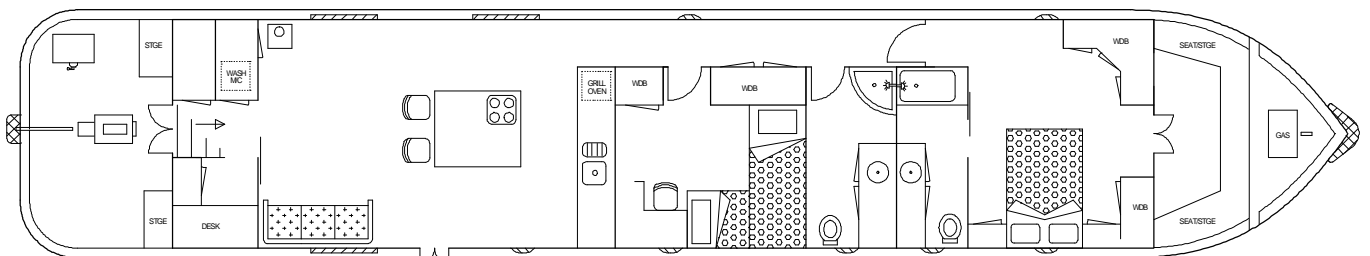
Insulation: Spray foam

Water heating: Engine, 240v immersion and Eberspacher (being repaired)

Headroom: 6 ft 8in

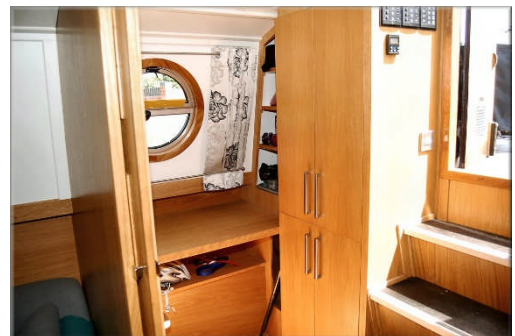
ACCOMMODATION (From aft)

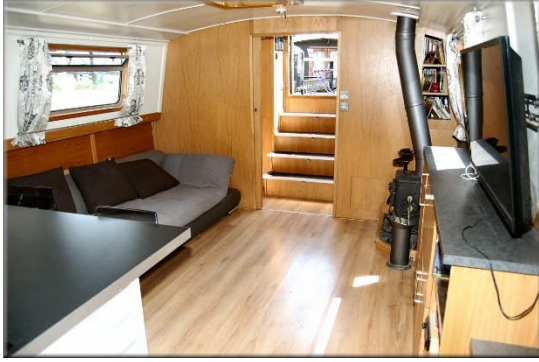
Cabin Arrangement: Office area, Saloon, Galley, Cabin, Bathroom, Double Cabin with on-suite.



Berth arrangement: 6- fixed double in own cabin two singles in own cabin plus convertible in saloon.

Office area: Steps down from stern, fitted bench / desk to starboard with fitted shelves below and on the aft bulkhead. Further is a four-door storage cupboard, housing electrics in the above section. To port are more fitted cupboards one of them housing the Hotpoint washing machine. Sliding doors continue forward into ...





Saloon: Designed for free standing furniture, currently comprises a large sofa to starboard that can convert to a double berth. Large black tiled hearth with solid fuel stove. Under gunnel fitted storage units to port with TV mounted above. Open plan into...

Galley: Large galley with centre island in white with black work surface and lots of storage below, 4 ring hob two gas two electric, the aft end of the island is used as a breakfast bar with two stools. Against the forward bulkhead is a section of white work surface with high level cupboards in black. Inset single bowl stainless steel sink and drainer unit. Tower unit housing the Whirlpool oven and grill. Below the work surface is the fridge and dishwasher. Passageway continues to port with full length under gunnel storage and large built-in wardrobe to starboard. Door into...



Cabin 1: Fitted with two large single beds, one low level and the other high level. Drawers below beds. At the aft end to starboard is a fitted desk with chair. Full size wardrobe with sliding doors to port. Passageway continues forward into ...

Bathroom: Fully tiled in white with a row of deco tiles in the centre. Against the forward bulkhead is a step-in shower with sliding doors and further a section of wood effect work surface with round black basin and mixer tap. Large mirror above. Storage below work surface. Pump out toilet. Electric radiator. Passageway continues forward into ...





Double cabin: Walk around bed with storage below. Bedside tables with fitted lights under gunnel. Storage cupboards above. To port fitted shelves with radiator and open storage below. Against the forward bulkhead to each side of the front doors are two full size wardrobes. Door at the aft bulkhead leads into the on-suite bathroom. Fully tiled in black and white deco tiles. White work surface with white round basin and mixer tap. Large mirror above. Step-in shower with

sliding doors, pump out toilet.

This boat has not been cleared and personal possessions will be removed prior to sale.

GENERAL

Berth transferable: Possible cruising berth by arrangement

Sale type: Private

VAT status: The VAT status of this vessel is not known.

Viewing: By appointment

PLEASE NOTE

In this case we are acting as Brokers only.

Whilst every care has been taken in their preparation, the correctness of these particulars is not guaranteed.

The particulars are intended only as a guide and they do not constitute a term of any contract.

A prospective buyer is strongly advised to check the particulars and where appropriate at his own expense to employ a qualified Marine Surveyor to carry out a survey and / or to have an engine trial conducted which if conducted by us shall not imply any liability for such engine on our part.

The Vendor is not selling in the course of a business.

The VAT status of the vessel is not known, unless otherwise stated.

All sales subject to contract. No guarantee is given or implied as to the condition or legal title.

No appliances or systems have been tested. All measurements stated are approximate.

© Virginia Curren Marine Ltd 2017

Accredited members of

