

---

## LADY GODIVA

**£34,000**

---

### General.

*Builder:* Cammell Laird*Type:* Cruiser Stern*Fitted:* By owners in 2008*Year:* 1981*Length:* 70ft (21m)*Beam:* 6ft 10in (2.1m) *Draught:* c2ft (0.6m)*Lying:* High Line Yachting, Iver*CRT no:* 79208*CIN No:*

N/A

*BSC to:* 05/2019

---

### History

Cammell-Laird built narrowboat and fully accessible, she was a regular sight on the Coventry Canal from the early 1980's to the 1990's. It was built to replace the ageing Pearl Hyde.

This vessel has been built with thick steel and is number 8 out of 20 boats that were built by Cammell Laird, was used as a trip boat having wheel chair access at the bow. She has fitted steel planks to access the bow and very large front deck. She was last out of the water in 2014 for blacking with bitumen and the exterior has been repainted in 2016. Last survey report was carried out in 2008 and all recommendations where amended.

---

### Hull & Exterior.

*Material / build:* All steel. Thicknesses: 13 – 7mm



*Exterior:* Black bitumen painted hull to rubbing band. Navy blue from rubbing band through side decks with blue cabin sides. Roof in grey. Name sign written on the bow to each side.

*Windows:* Large side opening windows, 4 to port and 3 to starboard.

*Forward well:* Large forward well with teak deck. Rope fender. Two mooring dollies and T stud. tunnel light. Steel rail around the entire bow. Two central varnished timber doors to accommodation.

**Roof:** Sliding hatch over access aft. Tubular steel hand rails, 5 mushroom vents, storage box, pole and plank holder. Flue for solid fuel stove and flue for Paloma gas heater

**Aft deck:** Rope fender, 6 mooring dollies, steel cants, diesel filler. Gas locker containing 2 x 13kg gas bottles Tiller steering. Self draining deck. Chequer plate hatches to engine bay. Two central timber lined steel doors to accommodation.

---

### **Mechanical & Electrical.**

**Engine:** Perkins                      **Gearbox:** PRM 260      **Cooling:** Skin tank  
**Calorifier feed:** No  
**Bowthruster:** No  
**Weed hatch:** Quick release                      **Stern gland greaser:** Remote  
**Bilge pump:** 12v Auto  
**Batteries:** 12v      **Domestic:** 3                      **Engine:** 1  
**240v:** Yes                      **Inverter:** Antaras 2000kw  
**Charger:** 240v Sterling 30amp-. 12v Digital Sterling split charger from alternator.  
**Generator:** No

---

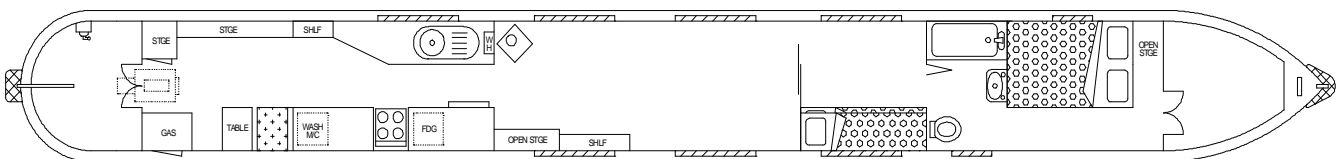
### **Interior.**

**Lining - floor to gunwale:** White painted panelling with matching trims  
**Lining - gunwale to ceiling:** As above  
**Lining - ceiling:** As above  
**Bulkheads:** As above  
**Flooring:** Most of the vessel carpet, laminate in galley and vinyl laminate effect in bathroom.  
**Lighting:** Halogen and LED  
**Cabin heating:** Solid fuel stove with back boiler feeding radiators  
**Insulation:** Rockwool  
**Water heating:** Paloma gas heater  
**Headroom:** 6ft 1in

---

### **ACCOMMODATION** (From aft)

**Cabin Arrangement:** Office, Galley, Saloon, Single Cabin, Bathroom, Double Cabin.



**Berth arrangement:** 3 - fixed double in own cabin plus fitted single bunk in own cabin

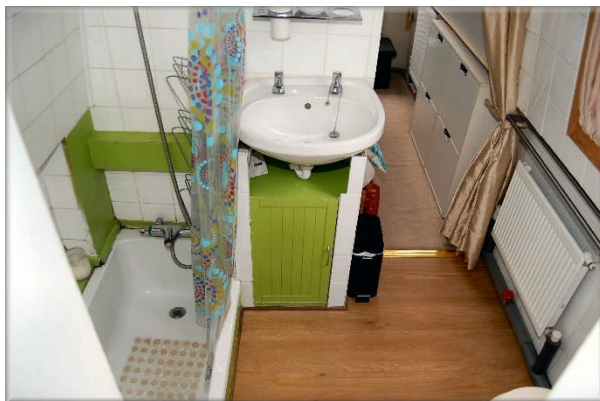
**Office:** Steps down from stern with fitted table and chairs to starboard. Section of fitted shelves to port. Open plan into...

*Galley:* Organized on both sides of the vessel, solid wood work surfaces with lots of storage below and above, open space to take a washing machine. To starboard is a Caprice 4 gas hob burner with oven and grill below. To port is an inset single bowl stainless steel sink and drainer unit. Passageway continues forward into ...



*Saloon:* Large saloon with the solid fuel stove at the aft end to port. Fitted shelf unit to starboard. (Furniture not included). Door continues forward into ...

*Single cabin:* Currently used as a kid's room with high level bunk with lots of storage below including hanging space. Door continues forward into ...



*Bathroom:* The bathroom is fitted with plastic tile effect. To port is the step-in shower with curtain, at the aft end open section of shelves. Against the aft bulkhead is the Traveller pump out toilet. Against the forward bulkhead is a mounted sink with storage below. Passageway continues forward into ...

*Double cabin:* The double bed is lengthways to port with memory foam mattress c.6ft3in x 4ft with storage below. Mounted on the aft bulkhead are storage boxes and shelves. To port at the forward end of the cabin is a small section of hanging space, step up to forward well with lots of storage below.



This boat has not been cleared and personal possessions will be removed prior to sale.

---

#### **GENERAL**

*Berth transferable:* Possible cruising berth by arrangement

*Sale type:* Private

*VAT status:* The VAT status of this vessel is not known.

*Viewing:* By Appointment. High Line Yachting, Mansion Lane, Iwer, SL0 9RG  
9am to 6pm Tuesday to Saturday, 11am to 5pm Sunday, closed Monday.

*Other sale considerations:* Furniture not included.

#### **PLEASE NOTE**

*In this case we are acting as Brokers only.*

*Whilst every care has been taken in their preparation, the correctness of these particulars is not guaranteed.*

*The particulars are intended only as a guide and they do not constitute a term of any contract.*

*A prospective buyer is strongly advised to check the particulars and where appropriate at his own expense to employ a qualified Marine Surveyor to carry out a survey and / or to have an engine trial conducted which if conducted by us shall not imply any liability for such engine on our part.*

*The Vendor is not selling in the course of a business.*

*The VAT status of the vessel is not known, unless otherwise stated.*

*All sales subject to contract. No guarantee is given or implied as to the condition or legal title.*

*No appliances or systems have been tested. All measurements stated are approximate.*

© Virginia Curren Marine Ltd 2017

Accredited members of

