

Virginia Currer Marine Ltd

Tel: 01753 652502

Mob: 07860 480079

Inland Waterway Specialists

The Boatyard, Mansion Lane, Iver, Buckinghamshire, SL0 9RG

Email: jc@vcmarine.co.uk

Web: www.vcmarine.co.uk

JADE MARIE [DRAFT]

£23,500

General.

Builder: North Shropshire Narrowboats

Type: Traditional Narrowboat

Fitted: North Shropshire Narrowboats

Year: 1990

Length: 45ft (13.7m)

Beam: 6ft 10in (2.1m)

Draught: c2ft (0.6m)

Lying: High Line Yachting, Iver

CRT no: 49931

CIN No:

BSC to: Oct 2017

History

Jade Marie has been used as a 'live-aboard' in recent years by the current owner, and has been fitted with an Innotech solar panel. The vessel was last out of the water for hull repainting in Jan 2017 and the engine was serviced Feb 2017. A 2013 hull survey is available for viewing.

Hull & Exterior.

Material / build: All steel. Thicknesses: 8mm base / 6mm sides / 4mm superstructure



Exterior: Black bitumen painted hull to rubbing band. Black from rubbing band through side decks, with non slip finish to side decks.

Windows: Brass portholes 5 on either side. Opening side hatch on starboard and glazed roof light/hatch.

Forward well: Rope fender. Steel cants. 'T' stud. Gas locker containing 1 x 13kg gas bottle. Self draining steel well deck. Cratch board. Two central half glazed doors to accommodation.

Roof: Sliding hatch over access aft. Solar Panel. 3 x brass mushroom vents, Glazed roof hatch, solid fuel solve flue and opening hatch over side doors.

Aft deck: Rope fender, 2 mooring dollies, steel cants, diesel filler. Tiller steering. Self draining deck. Two central timber lined steel doors to accommodation.

Mechanical & Electrical.

Engine: Perkins 4108

Gearbox: Prm 120D2 Cooling: Skin tank

Calorifier feed: Yes

Last service: Feb 2017 Hours:

Bowthruster: No

Weed hatch: Quick release

Stern gland greaser: Remote

Bilge pump: 12v Auto

Batteries: 12v

Domestic: 2

Engine: 1

240v: Yes

Inverter: No Charger: No

Generator: No

Interior.

Lining – Cabin linings in bedroom and bathroom are varnished timber, with white painted panelling through Galley and Saloon.

Flooring: Dark grey painted plywood.

Lighting: Mixed – mainly LED

Cabin heating: Puffin Villager solid fuel stove.

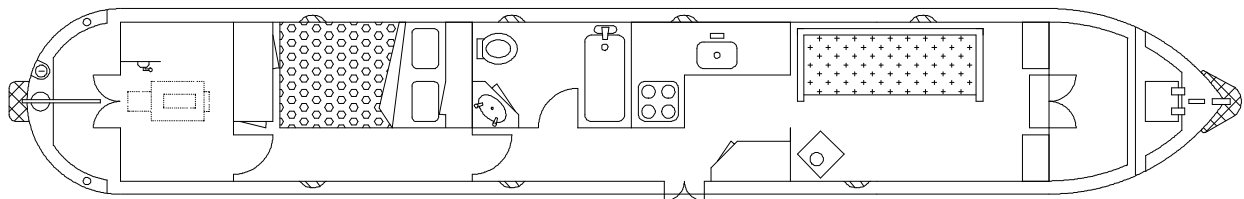
Insulation: Polystyrene

Water heating: Calorifier, heated by engine.

Headroom: 6'3"

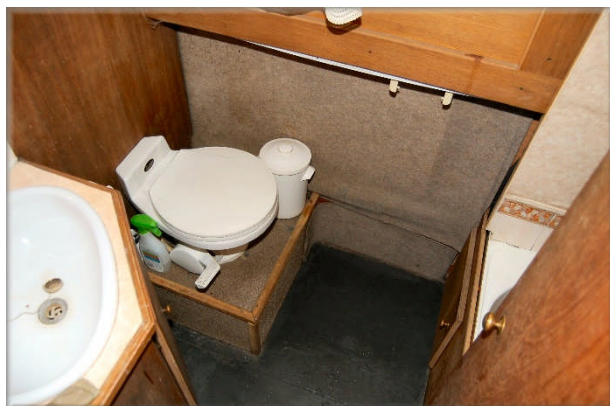
ACCOMMODATION (From aft)

Cabin Arrangement: Bedroom / Bathroom / Galley / Saloon



Berth arrangement: 3 - fixed double in own cabin, plus 1 in saloon.

Cabin 1: The 6'4" double bed is lengthways to port with drawers below. Full height storage across the aft bulkhead includes hanging space and an airing cupboard above the calorifier. There is a storage alcove on the forward bulkhead, with a locker above. Passageway continues forward into ...



Cabin 2: The bathroom is laid out on the port side. White plastic basin with tiled splashback and cupboard below. Traveller pump out toilet with cupboard inset into aft bulkhead above. White hip bath / shower arranged across forward bulkhead with grey marble effect surround. Bookshelves fitted on starboard side corridor leading into...

Cabin 3: The Galley comprises of an L shaped white tiled worktop to port, with an additional workspace and cupboard to starboard. Belfast style ceramic sink, Vanette 4 burner hob, oven and grill. Open plan into...



Cabin 4: Saloon. Furnished with day bed seating to port, providing an optional 3rd berth. Solid fuel stove. Low level storage cupboards against forward bulkhead, either side of half glazed doors leading onto forward cockpit.

This boat has not been cleared and personal possessions will be removed prior to sale.

GENERAL

Berth transferable: Possible cruising berth by arrangement

Sale type: Private

VAT status: The VAT status of this vessel is not known.

Viewing: High Line Yachting, Mansion Lane, Iver, SL0 9RG
9am to 6pm Tuesday to Saturday, 11am to 5pm Sunday, closed Monday.

Other sale considerations:

PLEASE NOTE

In this case we are acting as Brokers only.

Whilst every care has been taken in their preparation, the correctness of these particulars is not guaranteed.

The particulars are intended only as a guide and they do not constitute a term of any contract.

A prospective buyer is strongly advised to check the particulars and where appropriate at his own expense to employ a qualified Marine Surveyor to carry out a survey and / or to have an engine trial conducted which if conducted by us shall not imply any liability for such engine on our part.

The Vendor is not selling in the course of a business.

The VAT status of the vessel is not known, unless otherwise stated.

All sales subject to contract. No guarantee is given or implied as to the condition or legal title.

No appliances or systems have been tested. All measurements stated are approximate.

© Virginia Currer Marine Ltd 2017

Accredited members of

