

# Virginia Currer Marine Ltd

## Inland Waterway Specialists

The Boatyard, Mansion Lane, Iver, Buckinghamshire, SL0 9RG

Tel: 01753 652502  
Mob: 07860 480079

Email: [jc@vcmarine.co.uk](mailto:jc@vcmarine.co.uk)  
Web: [www.vcmarine.co.uk](http://www.vcmarine.co.uk)

---

### ARK II

**£43,000**

---

#### General.

<i>Builder:</i> Tony Francis	<i>Type:</i> Traditional Stern	
<i>Fitted:</i> Partially owners	<i>Year:</i> 1997	
<i>Length:</i> 50ft (15m)	<i>Beam:</i> 6ft 10in (2.1m) <i>Draught:</i> c2ft (0.6m)	
<i>Lying:</i> High Line Yachting, Iver		
<i>CRT no:</i> 502199	<i>CIN No:</i> N/A	<i>BSC to:</i> 06/2021

---

#### History

This is a traditional style narrowboat with modern interior. She was last out of the water in February 2016 at which time the hull was grit blasted and Epoxy applied, new anodes were also fitted. The boat has been with the same owner since 2013 and has been very well maintained and updated since.

---

#### Hull & Exterior.

*Material / build:* All steel.    Thicknesses: 10 – 6 – 4mm



*Exterior:* Black Epoxy painted hull to side decks. Navy blue cabin sides with cream coach line and name sign written on both sides. Roof in grey with non-slip finish.

*Windows:* Portholes, four to each side and Houdini hatch in centre on roof.

*Forward well:* Large forward well with space to take table and chairs. Rope fender. Steel cants. 'T' stud and fairleads. Gas locker containing 2 x 13kg gas bottles. Self draining steel well deck. Water filler. Diesel tank for stove. Deck light. Central varnished timber door with brass porthole to accommodation.

*Roof:* Opening hatch over access aft. Two solar panels, 4 brass mushroom vents, pole and plank holder housing plank and hook. Brass tunnel light, centre eye, flue for diesel stove and skylight in the kitchen area. Integrated steel hand rails.

*Aft deck:* Rope fender, 2 mooring dollies, steel cants, diesel filler. Tiller steering. Self draining deck. Two central timber lined steel doors to accommodation.

---

### **Mechanical & Electrical.**

*Engine:* Beta Marine 35hp *Gearbox:* PRM Delta  
*Cooling:* Skin tank flush base plate  
*Calorifier feed:* Yes *Last service:* 2016 *Hours:* 3714  
*Bowthruster:* No  
*Weed hatch:* Quick release *Stern gland greaser:* Remote  
*Bilge pump:* 12v Auto  
*Batteries:* 12V *Domestic:* 2 *Engine:* 1  
*240v:* Yes *Inverter:* Pro power Sterling 1800w  
*Charger:* Waeco Perfect Charge 20amp  
*Generator:* No  
*Solar panels:* 2 x 90w with Top Ray Solar control.  
*Galvanic Isolator.*

---

### **Interior.**

*Lining - floor to gunwale:* Painted tongue and groove.  
*Lining - gunwale to ceiling:* White painted panelling with matching trims  
*Lining - ceiling:* As above  
*Bulkheads:* As above  
*Flooring:* Carpet in cabin and saloon, Vinyl plank style wood effect in galley and bathroom.  
*Lighting:* LED spotlights throughout additional LED strips under gunnel in cabin, bathroom and in the galley under the storage units.  
*Cabin heating:* Kabola Diesel Stove (With back boiler not connected)  
*Insulation:* Polystyrene / Rockwool  
*Water heating:* Engine, 240v immersion and could reconnect to the diesel stove.  
*Headroom:* 6ft 3in

---

### **ACCOMMODATION** (From aft)

*Cabin Arrangement:* Engine Room, Double Cabin, Bathroom, Galley, Saloon.

*Berth arrangement:* 4- fixed double in own cabin plus convertible sofa in saloon.

*Engine room:* Step down from aft deck into engine room that is fully carpeted, against the aft bulkhead to port is a section of open storage and hanging space, further is a Zanussi 3kg washing machine. Door to starboard continues forward into ...

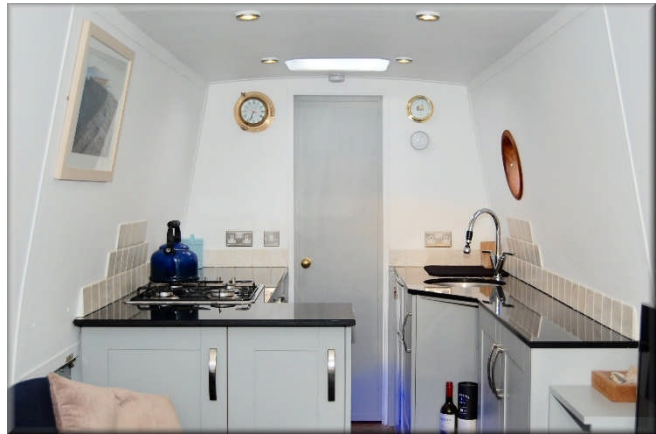
*Double cabin:* At the aft end of the cabin to port is a fitted open wardrobe with hanging space and shelves, the calorifier is located behind with easy access. The double bed is lengthways to port with interior John Lewis mattress c.6ft3in x 4ft fitted new in 2016. The bed can be lifted to provide lots of storage below. At the aft end on the bed against the aft bulkhead is open storage. LED strips below gunnel. Door to starboard continues forward into ...





*Bathroom:* Walk through bathroom, Step-in shower against the aft bulkhead with shower curtain and white tray, rear and side wall with black deco splash back. Next is a mirror mounted on the bulkhead. To port is an inset white basin with mixer tap and black granite effect work surface, storage cupboard below. To starboard is the electric flush cassette toilet. LED strips below gunnel. Centre door continues forward into ...

*Galley:* Organized on both sides of the vessel. Solid black granite work surfaces with grey storage cupboards and drawers below. To port is an inset single bowl stainless steel sink with drainer inset in the work surface. Cool Zone 12v fridge / freezer below work surface. To starboard is an inset Belling 4 gas hob burner with grill and oven below. LED strips below storage units. Open plan forward into ...



*Saloon:* Free standing furniture, to port is a TV (not included in the sale) unit with storage cupboards and shelves, further at the front end is the Kabola diesel stove. To starboard is a free-standing sofa that can convert to a double berth. Steps up to forward well with open shelves to starboard and hanging space to port.

This boat has not been cleared and personal possessions will be removed prior to sale.

---

## **GENERAL**

*Berth transferable:* Possible cruising berth and possible temporary residential berth by arrangement.

*Sale type:* Private

*VAT status:* The VAT status of this vessel is not known.

*Viewing:* High Line Yachting, Mansion Lane, Iver, SL0 9RG  
9am to 6pm Tuesday to Saturday, 11am to 5pm Sunday, closed Monday.

*Other sale considerations:* TV Not included in the sale.

**PLEASE NOTE**

*In this case we are acting as Brokers only.*

*Whilst every care has been taken in their preparation, the correctness of these particulars is not guaranteed.*

*The particulars are intended only as a guide and they do not constitute a term of any contract.*

*A prospective buyer is strongly advised to check the particulars and where appropriate at his own expense to employ a qualified Marine Surveyor to carry out a survey and / or to have an engine trial conducted which if conducted by us shall not imply any liability for such engine on our part.*

*The Vendor is not selling in the course of a business.*

*The VAT status of the vessel is not known, unless otherwise stated.*

*All sales subject to contract. No guarantee is given or implied as to the condition or legal title.*

*No appliances or systems have been tested. All measurements stated are approximate.*

© Virginia Curren Marine Ltd 2017

*Accredited members of*

